



**REPUBLIC OF SERBIA
SUPREME COURT OF CASSATION**

**REPORT ON THE WORK OF COURTS IN THE REPUBLIC OF SERBIA
FOR THE PERIOD JANUARY – JUNE 2017**

BELGRADE, AUGUST 2017



Kingdom of the Netherlands



Schweizerische Eidgenossenschaft
Confédération suisse
Confederazione Svizzera
Confederaziun svizra



SWEDEN



WORLD BANK GROUP



**REPUBLIC OF SERBIA
SUPREME COURT OF CASSATION**

**ANNUAL REPORT ON THE WORK OF THE COURTS IN THE REPUBLIC OF
SERBIA FOR THE PERIOD JANUARY – JUNE 2017**

The judicial power is unique, courts are independent and autonomous in their work and they adjudicate in accordance with the Constitution, laws and other general acts, when it is stipulated by law, generally accepted rules of international law and ratified international treaties.

Courts are autonomous and independent state bodies that protect the freedom and rights of citizens, legally determined rights and interests of legal entities and ensure constitutionality and legality.

**I
INTRODUCTION**

The basic division of courts is the division to courts of general and special jurisdiction.

Courts of general jurisdiction are basic courts, higher courts, appellate courts and the Supreme Court of Cassation.

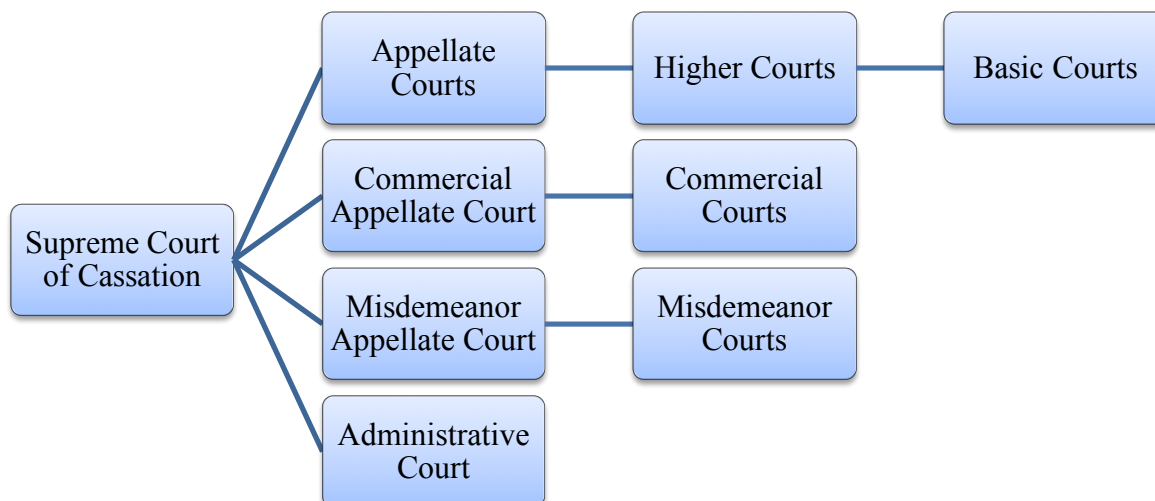
Courts of special jurisdiction are commercial courts, Commercial Appellate Court, misdemeanor courts, Misdemeanor Appellate Court and Administrative Court.

The Supreme Court of Cassation is the highest court in the Republic of Serbia and it is directly superior to the Commercial Appellate Court, the Misdemeanor Appellate Court, the Administrative Court and appellate courts.

In addition to the Supreme Court of Cassation, the Commercial Appellate Court, the Misdemeanor Appellate Court and the Administrative Court are republic level courts.

In the Republic of Serbia, as of January 1, 2014, there is total of 159 courts, of which 66 courts act as basic courts, 25 as higher, 16 commercial, 44 misdemeanor and the Administrative Court. Higher courts act as second instance courts, as well as 4 appellate courts, Commercial Appellate and Misdemeanor Appellate Court.

For the territory of the AP Kosovo and Metohija, until the adoption of a special law that would establish courts competent for that territory, 3 courts in Kosovska Mitrovica continue to work: Misdemeanor Court in Kosovska Mitrovica, Higher Court in Kosovska Mitrovica and Basic Court in Kosovska Mitrovica.



According to the data of the High Court Council on June 30, 2017, the total number of all judicial positions in all courts in the Republic of Serbia, determined in the Decision of the HCC, was **2990** judges' positions (on December 31, 2016 the total number was 2977), of which **2749** positions were filled (unlike 2016 when the total number of filled positions was 2778), while **2615** judges were effectively working (compared to 2016 when 2569 judges were effectively working), although the number of filled judicial positions was lower, compared to last year, since in this period there is no frequent use of annual leaves.

According to the data from 2016, the average age of judges in Serbia is 52; there is the total of 836 male and 1942 female judges. There are 244 judges that are 40 years old or younger, 756 judges up to 50 years of age, 1377 judges that are up to 60, and 401 judges that are older than 60. During 2016, in the court system, the total number of staff working, according to the data of the High Court Council and the Rulebook on Systematization of work positions of the Supreme Court of Cassation, was 10.563 of court staff, and their average age was 44. **From January till June 2017 these indicators haven't significantly changed.**

According to the Law on Budget for 2017, all courts are financed from the budget in the overall amount of **20.985.969.000,00** RSD, while for 2016, the overall planned amount was 18.884.991.000,00 RSD (in 2016, the amount allocated for the Supreme Court of Cassation was 418.148.000,00 RSD – 2,21% of the total budget for courts, and in 2017 the amount was **439.791.000,00** RSD or 2,09%). Compared to the total budget of the Republic of Serbia of **1.123.195.679.000,00** RSD for 2017 (1.085.308.426.000,00 RSD was the budget for 2016), the court related expenditures have the share of **1,86 %** in the overall budget (unlike in 2016, when that percentage was 1,74%).

II DISPOSED CASES

All courts in the Republic of Serbia disposed nearly 3.000.000 cases in 2016. Namely, 2569 judges disposed **2.953.921** cases.

In the period January – June 2017 the total number of disposed cases was 1.095.602, with 2615 judges effectively working.

The figures include all types of cases: from the trial matter and from enforcement matter.

Increased number of disposed cases in 2016 is the result of the systematic measures undertaken – the new Law on Enforcement and Security and the harmonization of case law in repetitive cases. 866.589 more cases were disposed compared to 2015. **The number of disposed enforcement cases in 2017 decreased significantly, since there are no extraordinary systemic interventions related to the disposition of these cases.**

Comparing the first half of 2016 with the first half of 2017, it is obvious that the number of disposed cases is now lower – namely, from January 1, 2016 to June 30, 2016 the total of 1.115.124 cases were disposed, while in the same period this year the total number of disposed cases was 1.095.602. The number of disposed cases in the first half of 2017 was also affected by the fact that the enforcement cases in Belgrade courts that were prepared for division between the First, the Second and the Third Basic Court in Belgrade were not processed, since the necessary prerequisite was the electronic migration of these cases: this is the total of 474.423 pending enforcement cases based on an authentic document.

It seems that in the first six months of 2017 the trend of disposing large number of cases in the courts in Serbia has been maintained, but, due to the limited effects of systemic measures defined only for the actions of courts in 2016, the comparison of data from 2017 would be realistic only compared to the data for the period from 2012 to 2015 and the first half of 2016.

The total of 256.742 cases related to the requests of citizens for verification of signatures, manuscripts and transcripts, issuing certificates and the like was disposed in basic courts, and these numbers are not shown in the tables, while in higher courts additional 12.068 of such cases were disposed. In misdemeanor courts the total of 383.976 cases were disposed that are not shown in the tables in this report for special courts. These cases are handled by the court administration under the supervision of judges, which is another **652.786** cases disposed in courts in the first half of 2017. The verification related cases in 2017 were transferred from basic courts to public notaries, as well as a certain number of probate proceedings.

The highest number of cases in the first half of 2017 was resolved in basic (533.506) and misdemeanor courts (357.836).

III INCOMING CASES IN THE FIRST HALF OF 2017

Comparative data on incoming cases in all courts in the Republic of Serbia (the influx of cases) indicate a significant increase of influx in 2015 and 2016. According to the indicators, the expected inflow in the period 2012 to 2014 was, without enforcement cases, at the level of about 1.500.000 cases per year. However, in 2015, the courts received 1.902.475 cases, which is 415.840 cases more compared to 2014, i.t. compared to the expectations. The inflow in 2016 was, once again, higher than expected, and even above the inflow seen in 2015. Thus, in 2015 and 2016, more than 850.000 more cases than expected entered the system, which affected the achievement of the planned objectives defined in [the strategic documents of the Supreme Court of Cassation](#) for backlog reduction.

Misdemeanor and basic courts suffered the biggest “shock” due to the increased inflow of cases. During 2016, this trend continued, but in the first six months of 2017 there has been a decline of influx, primarily in misdemeanor (2016: 412.765, 2017: 268.094) and basic courts (2016: 511.430, 2017: 440.872).

As noted in the Annual Report on the work of all courts for 2016, the Administrative Court records a continuously increased inflow of cases. The inflow in the Misdemeanor Appellate Court slightly increased, while in the Commercial Appellate Court the inflow increased by 561 cases compared to the same period last year.

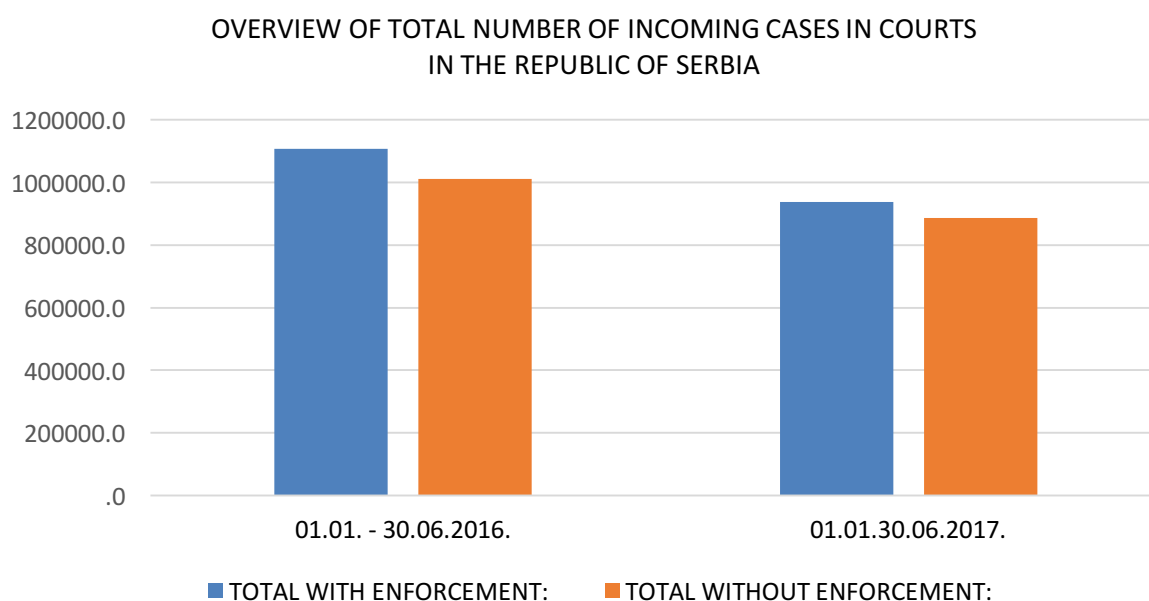
The highest increase in the inflow is recorded by higher courts: in the first half of 2016, all higher courts received 75.950 cases, while in the same period this year they received 101.997 cases, or 26.047 cases more. The structure and the number of incoming cases in higher courts are conditioned by the changes in legal competence of these courts: in matter “P” in the period from January 1 – June 30, 2016 higher courts received the total of **2.124 cases**, while in the same period this year they received **22.068 cases**, in the matter “P1” in the period from January 1 – June 30, 2016 higher courts received **304 cases**, and they received **2.567 cases** in the same period this year.

In the second instance civil matter, in the first half of 2016, higher courts received the total of **27.504 „GŽ“ cases**, while in the same period in 2017, they received the total of **40.307 „GŽ“ cases** (this number includes 5.000 cases delegated from the Higher Court in Belgrade).

In all higher courts in the territory of the Republic of Serbia 30 judges’ positions are constantly vacant: the systematization prescribes 368, and 335 positions are filled, while effectively, 322 judges worked in the system in the observed period. However, the inflow would not be handled even if all judges’ positions were filled (since 30 judges could resolve 30 cases per month, on average, or 5.400 cases in this period). In order to handle the inflow, additional 100 judges would be needed in the system of higher courts, so these circumstances show that, aside from the election of judges, other measures need to be undertaken in order to resolve this problem and that a comprehensive analysis of the effects of jurisdiction changes in higher courts needs to be done compared to basic courts in the civil matter.

| | 01/01 – 06/30/2016 | | 01/01 – 06/30/2017 | |
|--|--------------------|--------------------------------|--------------------|--------------------------------|
| OVERVIEW OF THE NUMBER OF INCOMING CASES IN COURTS IN THE REPUBLIC OF SERBIA | | | | |
| | Number of judges | Total number of incoming cases | Number of judges | Total number of incoming cases |
| TOTAL AT THE LEVEL OF SERBIA – ALL CASES | 2.604 | 1.107.374 | 2.615 | 937.017 |
| TOTAL AT THE LEVEL OF SERBIA – WITHOUT ENFORCEMENT | 2.319 | 1.011.238 | 2.360 | 887.468 |
| Basic Courts – I + Iv | 222 | 73.111 | 220 | 28.381 |
| Commercial Courts – all enforcement | 63 | 23.025 | 35 | 21.168 |

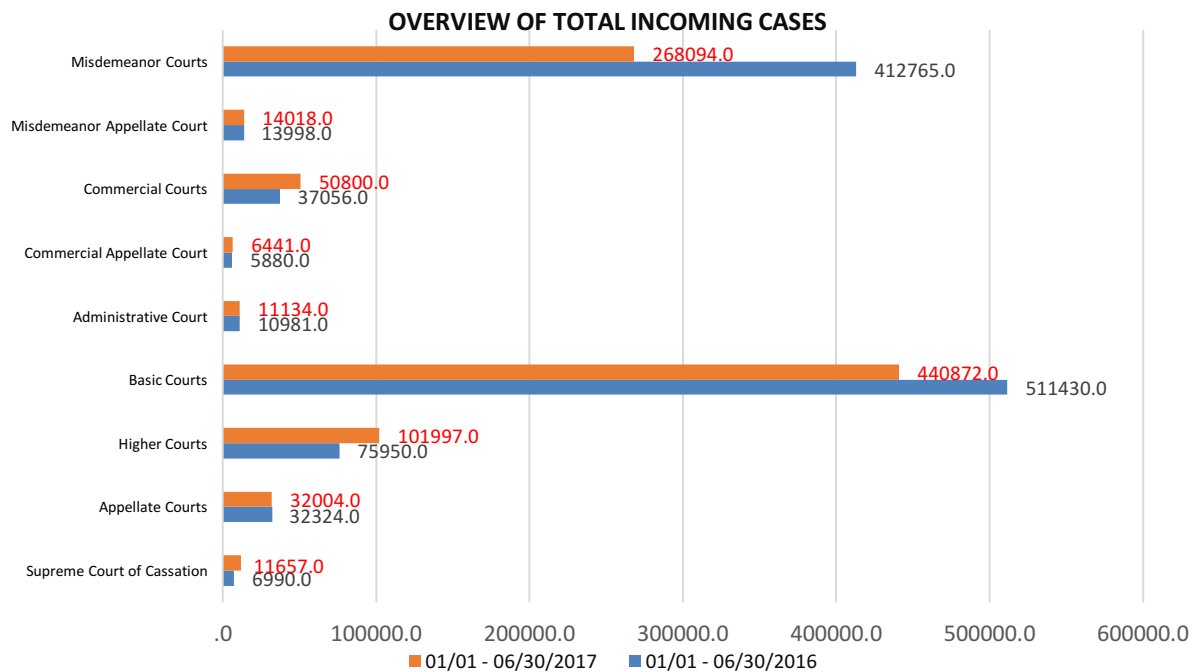
The inflow of enforcement cases decreased in the observed period, but the number of incoming cases in other matter decreased as well:



The majority of cases in the first half of 2017 were received by the basic and misdemeanor courts, followed by higher courts, where the inflow was significantly increased, and then commercial and appellate courts. Nevertheless, compared to the same period last year, the inflow is lower in basic and misdemeanor courts, while the number of incoming cases in higher, commercial and the Administrative Court is higher.

Total number of incoming cases for all matters

| Number | Court Name | Total incoming | |
|---------------|-----------------------------|--------------------|--------------------|
| | | 01/01 – 06/30/2016 | 01/01 – 06/30/2017 |
| 1 | Supreme Court of Cassation | 6.990 | 11.657 |
| 2 | Appellate Courts | 32.324 | 32.004 |
| 3 | Higher Courts | 75.950 | 101.997 |
| 4 | Basic Courts | 511.430 | 440.872 |
| 5 | Administrative Court | 10.981 | 11.134 |
| 6 | Commercial Appellate Court | 5.880 | 6.441 |
| 7 | Commercial Courts | 37.056 | 50.800 |
| 8 | Misdemeanor Appellate Court | 13.998 | 14.018 |
| 9 | Misdemeanor Courts | 412.765 | 268.094 |
| TOTAL: | | 1.107.374 | 937.017 |



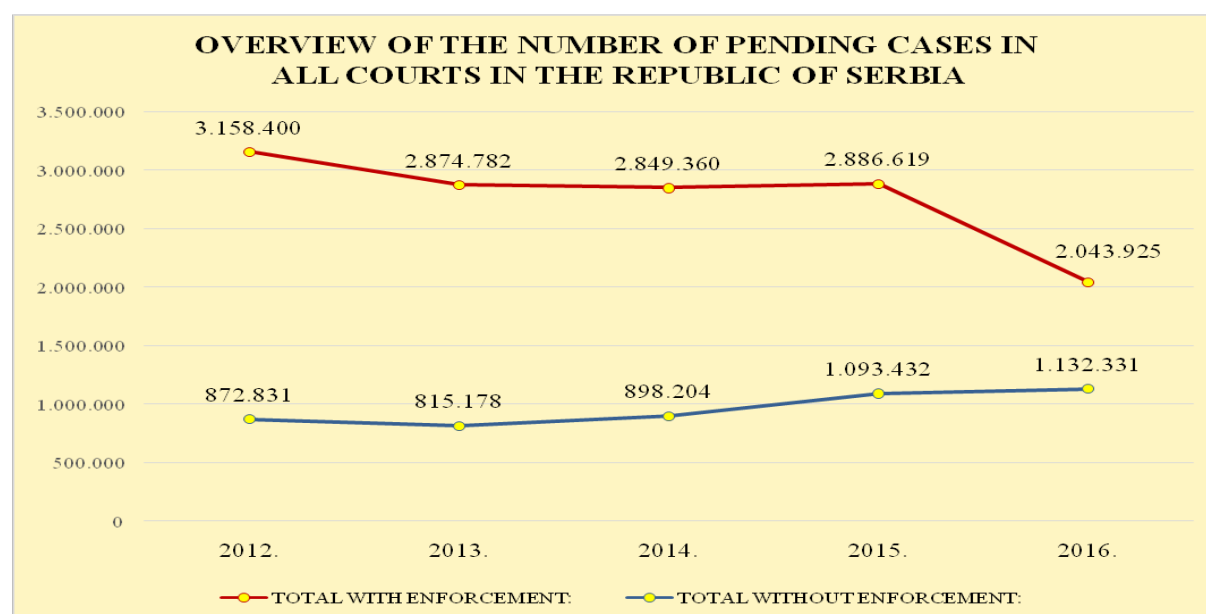
IV PENDING CASES AT THE END OF 2016

Comparative indicators for the period 2012-2016 indicate a significant decrease in the number of pending cases in all courts in the Republic of Serbia, so compared to 2012, there is 1.100.000 pending cases less.

In 2012, there were 3.158.400 pending cases, and at the end of 2016, there were 2.043.925 pending cases, including enforcement cases.

| | 2012 | | 2013 | | 2014 | | 2015 | | 2016 | |
|---|------------------|--|------------------|--|------------------|--|------------------|--|------------------|--|
| OVERVIEW OF THE NUMBER OF PENDING CASES IN ALL COURTS IN THE REPUBLIC OF SERBIA | | | | | | | | | | |
| | Number of judges | Total pending at the end of the reporting period | Number of judges | Total pending at the end of the reporting period | Number of judges | Total pending at the end of the reporting period | Number of judges | Total pending at the end of the reporting period | Number of judges | Total pending at the end of the reporting period |
| *TOTAL WITH ENFORCEMENT: | 2.380 | 3.158.400 | 2.652 | 2.874.782 | 2.595 | 2.849.360 | 2.522 | 2.886.619 | 2.569 | 2.043.925 |
| *TOTAL WITHOUT ENFORCEMENT: | 2.165 | 872.831 | 2.365 | 815.178 | 2.331 | 898.204 | 2.256 | 1.093.432 | 2.299 | 1.132.331 |

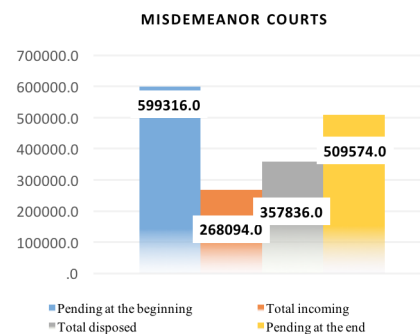
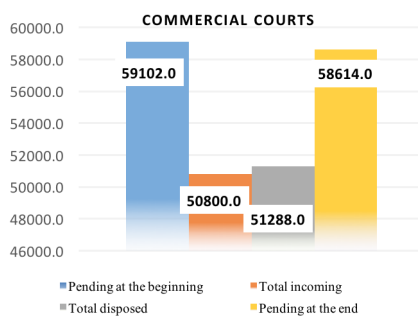
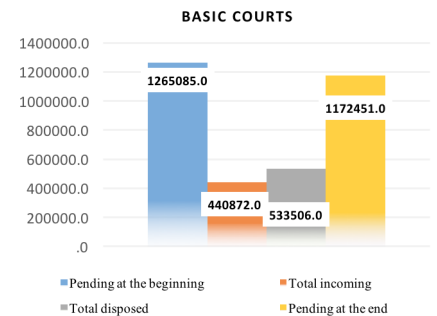
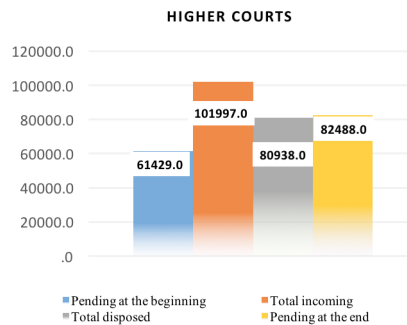
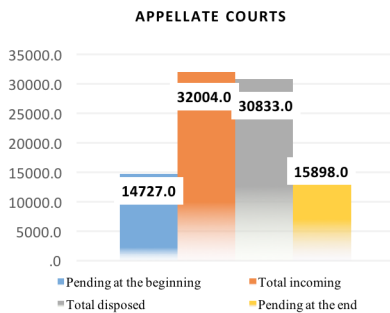
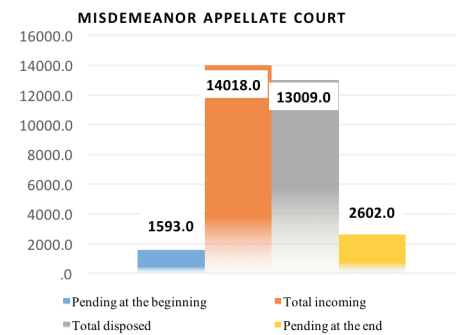
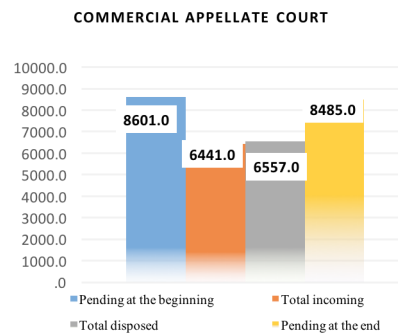
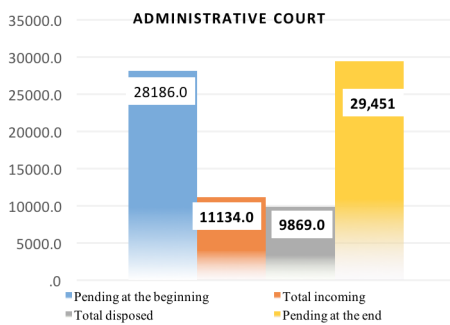
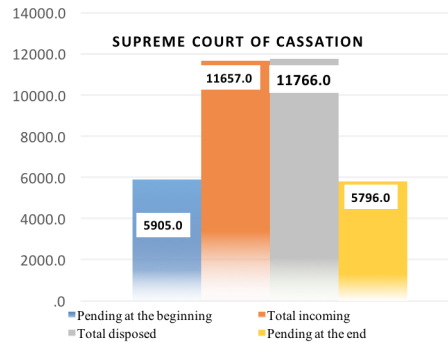
** In Basic courts - matters I, Iv were considered, as well as all enforcement cases in Commercial courts*



On June 30, 2017 there was a total of 1.885.359 pending cases in all matters, including enforcement cases. Compared to the number of pending cases on January 1, 2017 – 2.043.925, the number was reduced by 158.585 pending cases. In the period from 2012 to 2016, the number of pending cases decreased on the average by 220.000 cases per year, and only in the first six months of this year the total number of pending cases was reduced by 158.585, therefore, this projection indicates that this calendar year could end with higher number of disposed cases than the average level over the last five years, provided that the involvement of courts and judges remains at the current level.

V

RATIO BETWEEN PENDING CASES AT THE BEGINNING OF THE REPORTING PERIOD, INCOMING, DISPOSED AND PENDING CASES AT THE END OF THE REPORTING PERIOD BY TYPES OF COURTS ON JUNE 30, 2017



Supreme Court of Cassation – in the first six months of 2017, a significantly larger number of cases was received (5.000 delegated cases), but the inflow was cleared and the number of pending cases decreased slightly compared to the beginning of the year.

Administrative Court – In the first half of 2017, the number of incoming cases compared to the previous year was higher (2016: 10.981, a 2017: 11.134), but a smaller number of cases was disposed in the same period (2016: 10.461, a 2017: 9.869), therefore, the number of pending cases on June 30, 2017 is higher than at the beginning of the year.

Commercial Appellate Court – the inflow of new cases completely cleared, so on June 30, 2017 the total number of pending cases is smaller compared to the beginning of the year.

Misdemeanor Appellate Court – this court didn't have a positive clearance rate, so the number of pending cases increased from 1.593 at the beginning of reporting period to 2.602 at the end of reporting period.

Appellate Court – These courts didn't have a positive clearance rate, the number of pending cases increased. The number of pending Kž, Gž and Gž1 cases increased. In the Appellate Court in Belgrade and the Appellate Court in Novi Sad, the number of pending cases decreased in the first half of the year, while in the Appellate Court in Kragujevac and the Appellate Court in Nis the number of pending cases increased, with the highest increase of pending cases in the Appellate Court in Nis from 1.713 to 3.057, due to the increased inflow of cases in the matters Gž and Gž1: in the first six months in 2016 the total of 1.529 Gž and 1.944 Gž1 cases were received, while in the same period this year, this court received 3.495 Gž cases and 2.597 Gž1 cases.

Higher Courts – The number of pending cases in these courts increased due to an enormous increase of influx of P, P1 and Gž cases. In the first instance, the number of criminal cases is declining, while the number of civil cases is growing. As stated in the section on incoming cases, the number of incoming cases and pending cases in higher courts, requires systematic interventions and special measures and assistance in the busiest courts.

Basic Courts – The number of pending cases in these courts is decreasing in criminal and civil matter, and individual measures need to be undertaken in order to continue this trend.

Commercial Courts – Despite a significantly increased inflow in 2017 with 50.800 cases, compared to the same period last year (37.056 cases), commercial courts managed to handle their inflow and reduce the number of pending cases to 58.614, and this trend should continue.

Misdemeanor Courts – In the first six months of 2017, these courts had a significantly lower inflow compared to the same period last year, so the total number of pending cases was reduced by more than 90.000 cases.

VI BACKLOG CASES

On August 10, 2016, the Supreme Court of Cassation adopted the [Amended Single Backlog Reduction Program in the Republic of Serbia](#), and its enforcement started on September 1, 2016. Program duration was extended until 2020. The amended program integrated the previous Single Backlog Reduction Program and the Special Program for Backlog Reduction of Enforcement Cases. Also, the amended program envisages systemic (strategic), general, special measures for backlog enforcement cases, individual measures for courts, measures that will be undertaken by the Ministry of Justice, measures undertaken by the Supreme Court of Cassation, as well as the special measures for courts located on the territory of the City of Belgrade. Detailed classification of measures is a novelty compared to the previous Single Backlog Reduction Program. Another novelty in the program are the established objectives on terms of the number of backlog by matters in courts of certain type and instance by 2020.

REPORT ON PENDING BACKLOG CASES ON DECEMBER 31 – ACCORDING TO THE DATE OF THE INITIAL ACT

| | Number of judges | TOTAL PENDING BACKLOG CASES on Dec 31, 2012 | Number of judges | TOTAL PENDING BACKLOG CASES on Dec 31, 2013 | Number of judges | TOTAL PENDING BACKLOG CASES on Dec 31, 2014 | Number of judges | TOTAL PENDING BACKLOG CASES on Dec 31, 2015 | Number of judges | TOTAL PENDING BACKLOG CASES on Dec 31, 2016 |
|---|------------------|---|------------------|---|------------------|---|------------------|---|------------------|---|
| | 2012 | | 2013 | | 2014 | | 2015 | | 2016 | |
| TOTAL AT THE LEVEL OF SERBIA WITH ENFORCEMENT | 2.380 | 1.729.768 | 2.652 | 1.773.475 | 2.595 | 1.822.001 | 2.522 | 1.740.400 | 2.569 | 915.667 |
| TOTAL AT THE LEVEL OF SERBIA WITHOUT ENFORCEMENT | 2.165 | 140.418 | 2.365 | 127.773 | 2.331 | 126.878 | 2.256 | 133.365 | 2.299 | 125.463 |

* In commercial courts all enforcement cases are included, and in basic courts only I, Iv

* Cases regarding reasonable deadline in Higher Courts were not included for 2014 and 2015

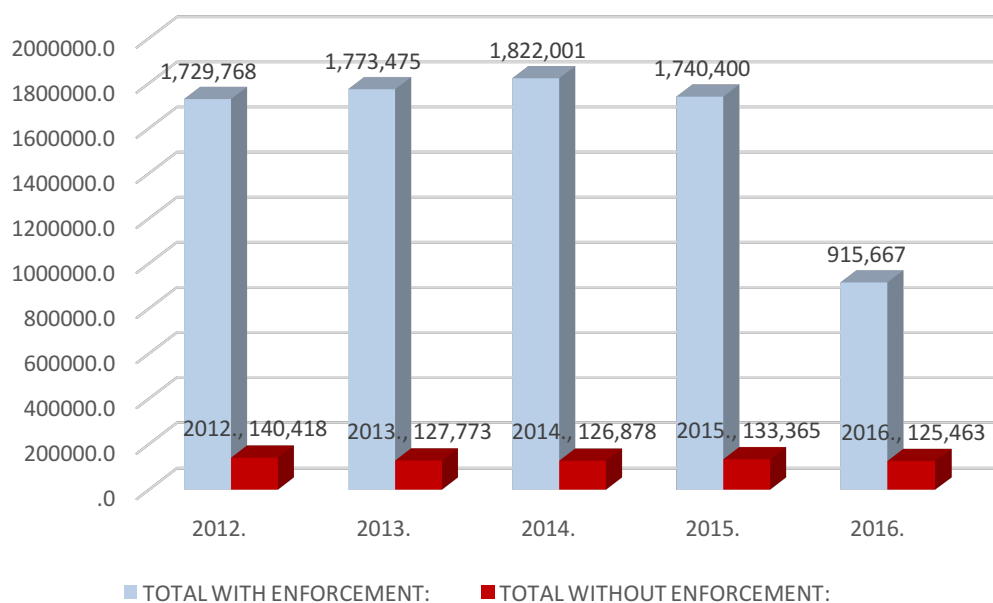
Enforcement

| | | | | | |
|---------------------------------------|-----------|-----------|-----------|-----------|---------|
| * Commercial courts (all enforcement) | 22.771 | 29.872 | 31.804 | 32.180 | 24.303 |
| * Basic courts (I, Iv) | 1.566.579 | 1.615.830 | 1.663.319 | 1.574.855 | 765.901 |

By implementing the measures from these strategic documents, the Supreme Court of Cassation, in its Annual Report on the work of all courts in 2016 presented the number of pending backlog cases (cases in which the proceedings last longer than two years from the date of the initial act) for the period 2012-2016, and it separates the indicators that include all backlog pending cases and indicators on the number of backlog cases without enforcement cases.

Compared to 2012, the total of pending backlog cases at the end of 2016 was 814.101 cases less. Excluding the enforcement cases, and compared to 2012, there is now 14.955 less cases.

BACKLOG CASES ACCORDING TO THE DATE OF THE INITIAL ACT AT THE LEVEL OF
SERBIA, ON DECEMBER 31

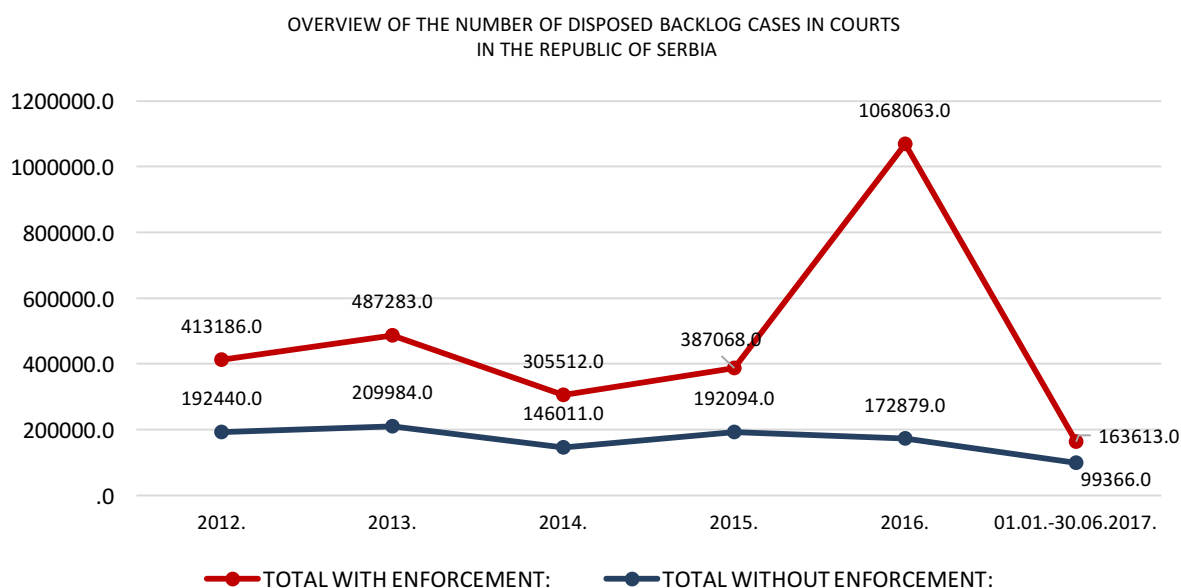


In the observed period, from January 1 till June 30, 2017, the trend of decline in the number of backlog cases continued, from 915.774 cases at the beginning of reporting period to 892.783 cases, which means that even does cases that became backlog during the reporting period were disposed, and their overall number decreased.

VII DISPOSED BACKLOG CASES

The total number of disposed cases in the observed period, from January 1 till June 30, 2017, in all courts in the Republic of Serbia was 1.095.602. Out of this number, the total of 163.613 backlog cases, from the date of the initial act, were disposed.

| | 2016 | 01/01 – 06/30/2017 | | |
|--|------------------|--|------------------|--|
| OVERVIEW OF THE NUMBER OF DISPOSED BACKLOG CASES IN COURTS IN THE REPUBLIC OF SERBIA | | | | |
| | Number of judges | Total number of disposed backlog cases | Number of judges | Total number of disposed backlog cases |
| TOTAL AT THE LEVEL OF SERBIA – ALL CASES | 2.569 | 1.068.063 | 2.615 | 163.613 |
| TOTAL AT THE LEVEL OF SERBIA – WITHOUT ENFORCEMENT | 2.299 | 172.879 | 2.360 | 98.805 |
| Basic Courts – I + Iv | 205 | 878.576 | 220 | 60.431 |
| Commercial Courts – all enforcement | 65 | 16.608 | 35 | 4.377 |



VIII STRUCTURE OF PENDING BACKLOG CASES IN THE FIRST HALF OF 2017

The structure of pending backlog cases (at the national level), observed by type of courts indicates that the largest number of backlog cases are in basic courts, which also have the largest number of cases older than 10 years.

REPORT ON PENDING BACKLOG CASES ON JUNE 30, 2017 – FROM THE DATE OF THE INITIAL ACT WITH ENFORCEMENT

| No | Court Name | Numb er of judges | TOTAL CASELOA D (total pending at the beginning + total incoming) 01.01- 30.06.2017. | TOTAL PENDING CASES WITH DURATIO N OF PROCEEDI NGS LONGER THAN 24 MONTHS SINCE THE INITIAL ACT on June 30, 2017 | | AGE OF PENDING BACKLOG CASES | | | | | | % OF BACKLOG CASES COMPARED TO TOTAL CASELOAD | AVERAGE NUMBER OF BACKLOG CASES PER JUDGE |
|----|----------------------------------|-------------------------|---|--|-------------------------|------------------------------|--------|--------|--------|---------|--------------|--|--|
| | | | | | From 6 months to 1 year | From 9 months to 1 year | 1 to 2 | 2 to 3 | 3 to 5 | 5 to 10 | More than 10 | | |
| 1 | Supreme Court of Cassation | 35 | 17.562 | 4.152 | | | | 815 | 1.318 | 1.452 | 567 | 23,64 | 118,63 |

| No | Court Name | Numb er of judges | TOTAL CASELOA D (total pending at the beginning + total incoming) 01.01- 30.06.2017. | TOTAL PENDING BACKLOG CASES on June 30, 2017 | AGE OF PENDING BACKLOG CASES | | | | | | % OF BACKLO G CASES COMPAR ED TO TOTAL CASELO AD | AVERAGE NUMBER OF BACKLOG CASES PER JUDGE | |
|--------|---------------------|-------------------------|---|---|------------------------------|----------------------------|--------|--------|---------|---------|---|--|--------------|
| | | | | | From 6 months to 1 year | From 9 months to 1 year | 1 to 2 | 2 to 3 | 3 to 5 | 5 to 10 | | | More than 10 |
| 1 | Appellate Courts | 205 | 46.731 | 11.122 | | | | 2.995 | 3.819 | 3.338 | 970 | 23,80 | 54,25 |
| 2 | Higher Courts | 322 | 163.426 | 24.576 | | 9 | 31 | 7.891 | 9.085 | 6.086 | 1.474 | 15,04 | 76,32 |
| 3 | Basic Courts | 1.289 | 1.705.957 | 807.087 | | 7 | 11 | 78.582 | 99.731 | 491.964 | 136.792 | 47,31 | 626,13 |
| TOTAL: | | 1.816 | 1.916.114 | 842.785 | | 16 | 42 | 89.468 | 112.635 | 501.388 | 139.236 | 43,98 | 464,09 |

| No | Court Name | Numb er of judges | TOTAL CASELOAD (total pending at the beginning + total incoming) 01.01- 30.06.2017. | TOTAL PENDING BACKLOG CASES on June 30, 2017 | AGE OF PENDING BACKLOG CASES | | | | | | % OF BACKLOG CASES COMPARED TO TOTAL CASELOAD | AVERAGE NUMBER OF BACKLOG CASES PER JUDGE | |
|--------|----------------------------------|-------------------------|---|---|------------------------------|-------------------------|--------|--------|--------|---------|--|--|--------------|
| | | | | | From 6 months to 1 year | From 9 months to 1 year | 1 to 2 | 2 to 3 | 3 to 5 | 5 to 10 | | | More than 10 |
| 1 | Administrativ e Court | 40 | 39.320 | 3.187 | | | | 2.927 | 256 | 4 | | 8,11 | 79,68 |
| 2 | Commercial Appellate Court | 34 | 15.042 | 4.236 | | | | 1.994 | 1.674 | 500 | 68 | 28,16 | 124,59 |
| 3 | Commercial Courts | 152 | 109.902 | 27.652 | | | | 6.779 | 11.025 | 9.657 | 191 | 25,16 | 181,92 |
| TOTAL: | | 226 | 164.264 | 35.075 | | | | 11.700 | 12.955 | 10.161 | 259 | 21.35 | 155.20 |

IX STRUCTURE OF PENDING BACKLOG CASES BY TYPES OF COURT IN TRIAL CASES

HIGHER COURTS REPORT ON PENDING BACKLOG CASES ON DECEMBER 31, 2016 – ACCORDING TO THE DATE OF THE INITIAL ACT

| Number | Matter | Number of judges | TOTAL CASELOAD (total pending at the beginning + total incoming) on Dec 31, 2016 | TOTAL PENDING BACKLOG CASES on Dec 31, 2016. | AGE OF BACKLOG CASES | | | | % OF BACKLOG BASES COMPARED TO TOTAL CASELOAD | AVERAGE NUMBER OF BACKLOG CASES PER JUDGE |
|-------------------------|--------|------------------|--|--|----------------------|--------|---------|--------------|---|---|
| | | | | | 2 TO 3 | 3 TO 5 | 5 TO 10 | MORE THAN 10 | | |
| 1 | P | 91 | 21.390 | 1.727 | 573 | 539 | 498 | 117 | 8,07 | 18,98 |
| 2 | P1 | 82 | 1.973 | 284 | 98 | 133 | 50 | 3 | 14,39 | 3,46 |
| 3 | P2 | 68 | 989 | 30 | 18 | 9 | 3 | | 3,03 | 0,44 |
| 4 | GŽ | 109 | 81.737 | 15.143 | 4.698 | 6.393 | 3.332 | 720 | 18,53 | 138,93 |
| 5 | GŽ 1 | 96 | 3.291 | 408 | 89 | 134 | 139 | 46 | 12,40 | 4,25 |
| 6 | GŽ2 | 72 | 1.182 | 25 | 11 | 11 | 3 | | 2,12 | 0,35 |
| 7 | K | 92 | 4.783 | 1.025 | 268 | 408 | 300 | 49 | 21,43 | 11,14 |
| 8 | KŽ1 | 57 | 7.545 | 255 | 68 | 132 | 55 | | 3,38 | 4,47 |
| 9 | KIM | 45 | 3.578 | 22 | 9 | 11 | 2 | | 0,61 | 0,49 |
| 10 | KM | 44 | 2.397 | 4 | 2 | 1 | 1 | | 0,17 | 0,09 |
| TOTAL FOR TRIAL MATTERS | | 278 | 128.865 | 18.923 | 5.834 | 7.771 | 4.383 | 935 | 14,68 | 68,07 |
| TOTAL FOR ALL MATTERS | | 310 | 186.561 | 20.122 | 6.409 | 8.207 | 4.515 | 956 | 10,79 | 64,91 |

HIGHER COURTS REPORT ON PENDING BACKLOG CASES ON JUNE 30, 2017 – ACCORDING TO THE DATE OF THE INITIAL ACT

| Number | Matter | Number of judges | TOTAL CASELOAD (total pending at the beginning + total incoming) 01.01-30.06.2017. | TOTAL PENDING BACKLOG CASES on June 30, 2017 | AGE OF BACKLOG CASES | | | | % OF BACKLOG BASES COMPARED TO TOTAL CASELOAD | AVERAGE NUMBER OF BACKLOG CASES PER JUDGE |
|-------------------------|--------|------------------|--|--|----------------------|--------|---------|--------------|---|---|
| | | | | | 2 TO 3 | 3 TO 5 | 5 TO 10 | MORE THAN 10 | | |
| 1 | P | 119 | 39.140 | 2.009 | 802 | 600 | 470 | 137 | 5,13 | 16,88 |
| 2 | P1 | 91 | 3.698 | 301 | 134 | 111 | 53 | 3 | 8,14 | 3,31 |
| 3 | P2 | 70 | 611 | 33 | 17 | 11 | 4 | 1 | 5,40 | 0,47 |
| 4 | GŽ | 138 | 70.386 | 18.760 | 5.991 | 7.026 | 4.560 | 1.183 | 26,65 | 135,94 |
| 5 | GŽ 1 | 106 | 2.064 | 535 | 158 | 149 | 174 | 54 | 25,92 | 5,05 |
| 6 | GŽ2 | 66 | 677 | 26 | 14 | 8 | 4 | 0 | 3,84 | 0,39 |
| 7 | K | 81 | 3.318 | 971 | 225 | 392 | 314 | 40 | 29,26 | 11,99 |
| 8 | KŽ1 | 61 | 4.254 | 274 | 108 | 121 | 45 | 0 | 6,44 | 4,49 |
| 9 | KIM | 45 | 2.057 | 12 | 5 | 4 | 3 | 0 | 0,58 | 0,27 |
| 10 | KM | 41 | 1.239 | 3 | 0 | 2 | 0 | 1 | 0,24 | 0,07 |
| TOTAL FOR TRIAL MATTERS | | 288 | 127.444 | 22.924 | 7.454 | 8.424 | 5.627 | 1.419 | 17,99 | 79,60 |
| TOTAL FOR ALL MATTERS | | 322 | 163.426 | 24.576 | 7.891 | 9.085 | 6.086 | 1.474 | 15,04 | 76,32 |

BASIC COURTS
REPORT ON PENDING BACKLOG CASES
ON DECEMBER 31, 2016 – ACCORDING TO THE DATE OF THE INITIAL ACT

| Number | Matter | Number of judges | TOTAL CASELOAD (total pending at the beginning + total incoming) on Dec 31, 2016 | TOTAL PENDING BACKLOG CASES on Dec 31, 2016. | AGE OF PENDING BACKLOG CASES | | | | % OF BACKLOG BASES COMPARED TO TOTAL CASELOAD | AVERAGE NUMBER OF BACKLOG CASES PER JUDGE |
|-----------------------|--------|------------------|--|--|------------------------------|---------|---------|--------------|---|---|
| | | | | | 2 TO 3 | 3 TO 5 | 5 TO 10 | MORE THAN 10 | | |
| 1 | P | 558 | 336.162 | 28.814 | 10.087 | 11.089 | 6.568 | 1.070 | 8,57 | 51,64 |
| 2 | P1 | 293 | 70.055 | 8.469 | 3.582 | 2.466 | 2.122 | 299 | 12,09 | 28,90 |
| 3 | P2 | 268 | 53.611 | 702 | 470 | 195 | 35 | 1 | 1,31 | 2,62 |
| 4 | K | 292 | 74.460 | 7.604 | 2.302 | 3.415 | 1.403 | 484 | 10,21 | 26,04 |
| SUBTOTAL FROM 1-4 | | 967 | 534.288 | 45.589 | 16.441 | 17.165 | 10.128 | 1.854 | 8,53 | 47,14 |
| 5 | Iv | 197 | 1.528.649 | 661.644 | 17.172 | 103.844 | 428.929 | 111.692 | 43,28 | 3.358,60 |
| 6 | I | 189 | 315.982 | 104.257 | 31.452 | 40.495 | 26.162 | 6.148 | 32,99 | 551,62 |
| SUBTOTAL 5-6 | | 205 | 1.844.631 | 765.901 | 48.624 | 144.339 | 455.091 | 117.840 | 41,52 | 3.736,10 |
| ALL ENFORCEMENT | | 457 | 2.108.922 | 782.835 | 59.973 | 149.437 | 455.504 | 117.914 | 37,12 | 1.712,99 |
| TOTAL FOR ALL MATTERS | | 1.255 | 3.080.183 | 836.513 | 79.793 | 169.324 | 467.192 | 120.183 | 27,16 | 666,54 |

BASIC COURTS
REPORT ON PENDING BACKLOG CASES ON JUNE 30, 2017 – ACCORDING TO THE
DATE OF THE INITIAL ACT

| Number | Matter | Number of judges | TOTAL CASELOAD (total pending at the beginning + total incoming) 01.01-30.06.2017. | TOTAL PENDING BACKLOG CASES on June 30, 2017 | AGE OF PENDING BACKLOG CASES | | | | % OF BACKLOG BASES COMPARED TO TOTAL CASELOAD | AVERAGE NUMBER OF BACKLOG CASES PER JUDGE |
|-----------------------|--------|------------------|--|--|------------------------------|--------|---------|--------------|---|---|
| | | | | | 2 TO 3 | 3 TO 5 | 5 TO 10 | MORE THAN 10 | | |
| 1 | P | 620 | 229.805 | 29.494 | 11.616 | 10.848 | 5.957 | 1.073 | 12,83 | 47,57 |
| 2 | P1 | 290 | 53.046 | 7.789 | 3.548 | 2.294 | 1.685 | 262 | 14,68 | 26,86 |
| 3 | P2 | 292 | 33.025 | 643 | 414 | 195 | 32 | 2 | 1,95 | 2,20 |
| 4 | K | 297 | 46.602 | 6.293 | 2.068 | 2.415 | 1.320 | 490 | 13,50 | 21,19 |
| SUBTOTAL 1-4 | | 1.024 | 362.478 | 44.219 | 17.646 | 15.752 | 8.994 | 1.827 | 12,20 | 43,18 |
| 5 | Iv | 206 | 699.242 | 636.576 | 17.185 | 36.378 | 454.880 | 128.133 | 91,04 | 3.090,17 |
| 6 | I | 194 | 203.473 | 102.212 | 30.406 | 39.392 | 26.057 | 6.357 | 50,23 | 526,87 |
| SUBTOTAL 5-6 | | 220 | 902.715 | 738.788 | 47.591 | 75.770 | 480.937 | 134.490 | 81,84 | 3.358,13 |
| ALL ENFORCEMENT | | 483 | 1.082.134 | 754.280 | 56.896 | 81.407 | 481.434 | 134.541 | 69,70 | 1.561,66 |
| TOTAL FOR ALL MATTERS | | 1.289 | 1.705.957 | 807.087 | 78.582 | 99.731 | 491.964 | 136.792 | 47,31 | 626,13 |

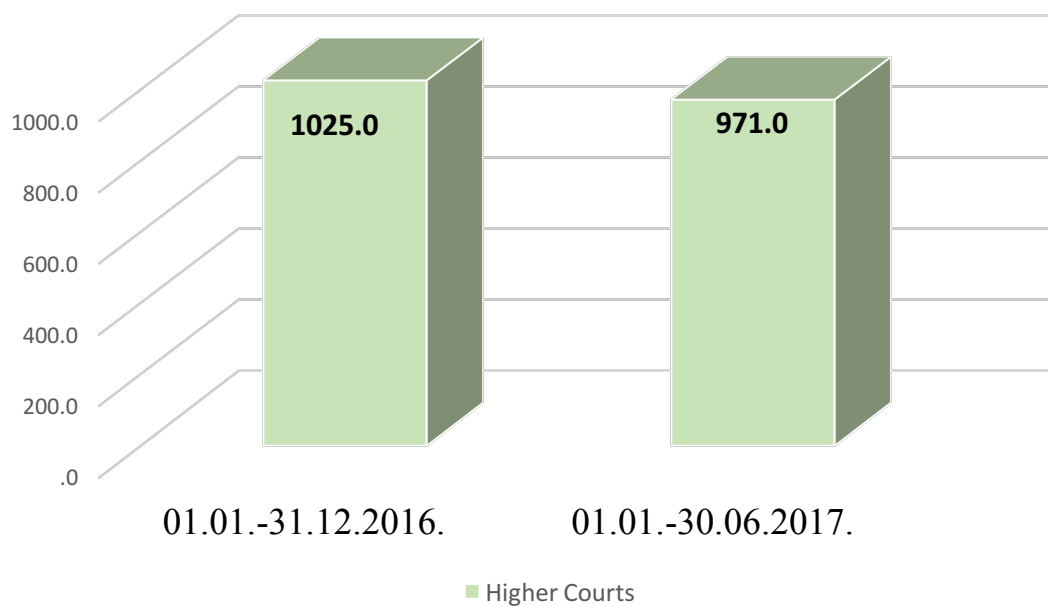
OVERVIEW OF PENDING BACKLOG CASES IN THE FIRST INSTANCE OF
CRIMINAL MATTER

| CRIMINAL MATTER | MATTERS | 01.01.-31.12.2016. | | 01.01. - 30.06.2017. | |
|-----------------|---------|--------------------|-----------------|----------------------|-----------------|
| | | Number of judges | Number of cases | Number of judges | Number of cases |
| Higher Courts | K | 92 | 1.025 | 81 | 971 |
| Basic Courts | K | 292 | 7.604 | 297 | 6.293 |
| TOTAL: | | 384 | 8.629 | 378 | 7.264 |

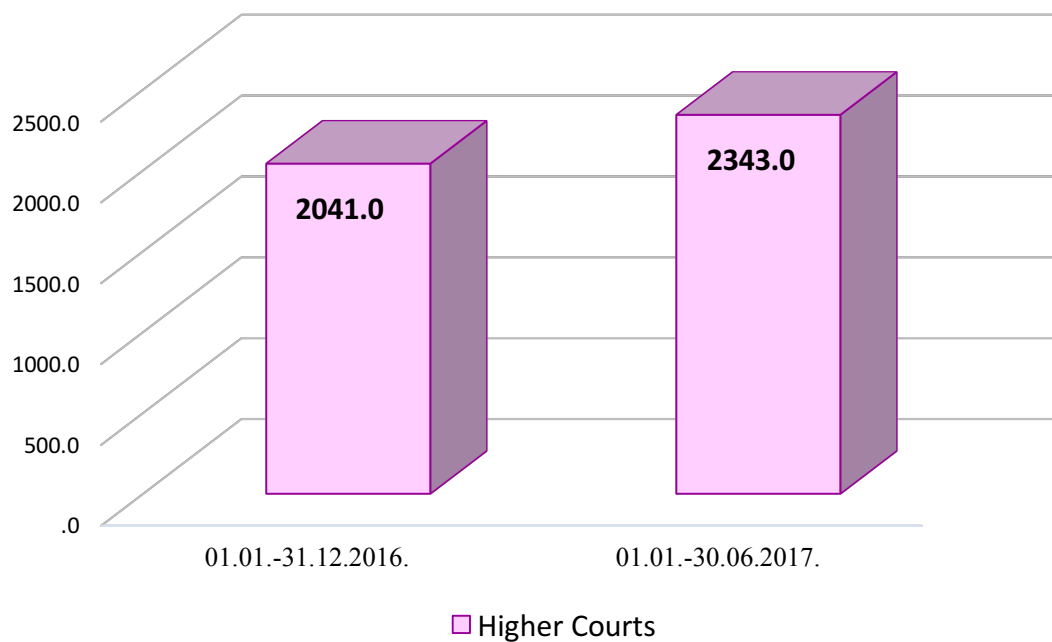
OVERVIEW OF PENDING BACKLOG CASES IN THE FIRST INSTANCE OF CIVIL
MATTER

| CIVIL MATTER | MATTERS | 01.01.-31.12.2016. | | 01.01. - 30.06.2017. | |
|--------------------------|---------|--------------------|-----------------|----------------------|-----------------|
| | | Number of judges | Number of cases | Number of judges | Number of cases |
| Higher Courts | P | 91 | 1.727 | 119 | 2.009 |
| | P1 | 82 | 284 | 91 | 301 |
| | P2 | 68 | 30 | 70 | 33 |
| TOTAL: | | 241 | 2.041 | 280 | 2.343 |
| Basic Courts | P | 558 | 28.814 | 620 | 29.494 |
| | P1 | 293 | 8.469 | 290 | 7.789 |
| | P2 | 268 | 702 | 292 | 643 |
| TOTAL: | | 1.119 | 37.985 | 1.202 | 37.926 |
| TOTAL BC + HC: | P | 649 | 30.541 | 739 | 31.503 |
| | P1 | 375 | 8.753 | 381 | 8.090 |
| | P2 | 336 | 732 | 362 | 676 |
| TOTAL P+P1+P2 (BC + HC): | | 1.360 | 40.026 | 1.482 | 40.269 |

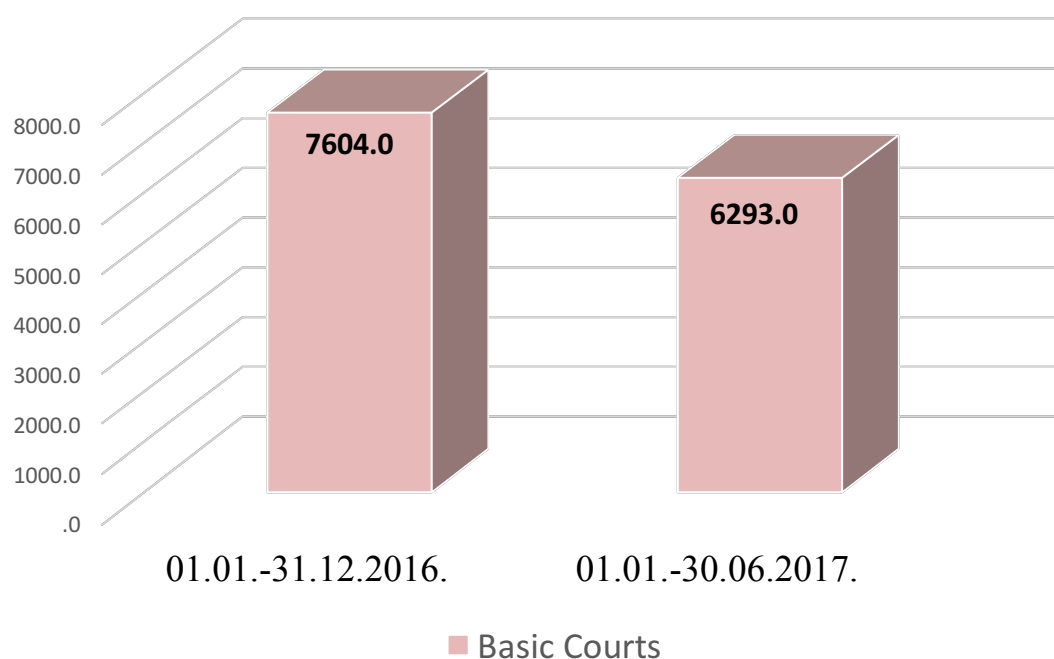
OVERVIEW OF BACKLOG CASES IN THE FIRST INSTANCE OF CRIMINAL MATTER (K)



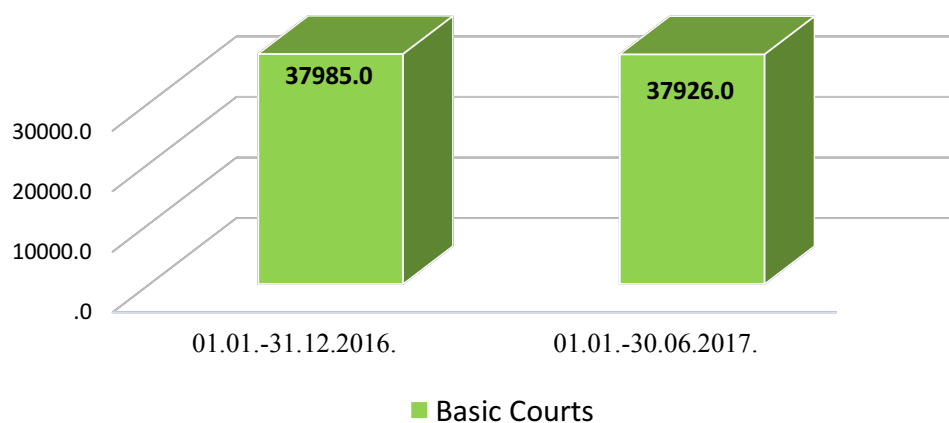
OVERVIEW OF BACKLOG CASES IN THE FIRST INSTANCE IN CIVIL MATTER (P, P1, P2)



OVERVIEW OF BACKLOG CASES IN THE FIRST INSTANCE OF CRIMINAL MATTER (K)



OVERVIEW OF BACKLOG CASES IN THE FIRST INSTANCE OF CIVIL MATTER (P, P1, P2)



PENDING CASES OLDER THAN 10 YEARS ON JUNE 30, 2017
IN HIGHER AND BASIC COURTS
for matters P, P1, P2, K

| No | Court Name | P | P1 | P2 | K |
|--------------------------------------|----------------------------------|------------|------------|----------|-----------|
| APPELLATE COURT IN BELGRADE | | | | | |
| 1 | Higher Court in Belgrade | 114 | 3 | 1 | 26 |
| 2 | Higher Court in Valjevo | 1 | | | |
| 3 | Higher Court in Pančevo | 1 | | | |
| 4 | Higher Court in Smederevo | | | | 1 |
| 5 | First Basic Court in Belgrade | 390 | 83 | 1 | 9 |
| 6 | Second Basic Court in Belgrade | 142 | 32 | 1 | 15 |
| 7 | Third Basic Court in Belgrade | 151 | 81 | | 17 |
| 8 | Basic Court in Lazarevac | | 1 | | 9 |
| 9 | Basic Court in Mladenovac | 1 | | | |
| 10 | Basic Court in Obrenovac | 1 | 2 | | |
| 11 | Basic Court in Valjevo | 5 | | | |
| 12 | Basic Court in Ub | 5 | | | |
| 13 | Basic Court in Pančevo | 6 | | | 2 |
| 14 | Basic Court in Velika Plana | 15 | 10 | | |
| 15 | Basic Court in Smederevo | 19 | 14 | | 3 |
| HIGHER AND BASIC - TOTAL | | 851 | 226 | 3 | 82 |
| APPELLATE COURT IN KRAGUJEVAC | | | | | |
| 1 | Higher Court in Kragujevac | 2 | | | 3 |
| 2 | Higher Court in Kraljevo | | | | 1 |
| 3 | Higher Court in Novi Pazar | 1 | | | |
| 4 | Higher Court in Požarevac | | | | 1 |
| 5 | Higher Court in Čačak | 1 | | | |
| 6 | Basic Court in Despotovac | 3 | | | |
| 7 | Basic Court in Jagodina | 7 | | | |
| 8 | Basic Court in Paraćin | 7 | 1 | | 2 |
| 9 | Basic Court in Arandelovac | 1 | | | 5 |
| 10 | Basic Court in Kragujevac | 13 | | | 1 |
| 11 | Basic Court in Kraljevo | 9 | | | |
| 12 | Basic Court in Brus | 1 | 2 | | |
| 13 | Basic Court in Kruševac | 29 | | | 1 |
| 14 | Basic Court in Trstenik | 1 | | | |
| 15 | Basic Court in Novi Pazar | 7 | 2 | | 2 |
| 16 | Basic Court in Veliko Gradište | 2 | | | |
| 17 | Basic Court in Petrovac na Mlavi | 4 | | | |
| 18 | Basic Court in Požarevac | 1 | 1 | | |
| 19 | Basic Court in Priboj | 1 | | | |
| 20 | Basic Court in Prijepolje | | | | 1 |
| 21 | Basic Court in Užice | 7 | 1 | | |
| 22 | Basic Court in Gornji Milanovac | 6 | | | |
| 23 | Basic Court in Ivanjica | 8 | | | |
| 24 | Basic Court in Čačak | 24 | 1 | | |
| HIGHER AND BASIC - TOTAL | | 135 | 8 | | 17 |

| APPELLATE COURT IN NIŠ | | | | | |
|-----------------------------|------------------------------------|-----|----|--|-----|
| 1 | Higher Court in Vranje | 7 | | | |
| 2 | Higher Court in Kosovska Mitrovica | | | | 3 |
| 3 | Higher Court in Negotin | 1 | | | |
| 4 | Higher Court in Niš | 3 | | | 2 |
| 5 | Basic Court in Vranje | 7 | 3 | | 2 |
| 6 | Basic Court in Surdulica | 4 | 1 | | |
| 7 | Basic Court in Bor | | 1 | | |
| 8 | Basic Court in Zaječar | 3 | | | |
| 9 | Basic Court in Kosovska Mitrovica | 5 | | | 396 |
| 10 | Basic Court in Lebane | 4 | | | |
| 11 | Basic Court in Leskovac | 51 | 2 | | |
| 12 | Basic Court in Majdanpek | | | | 1 |
| 13 | Basic Court in Negotin | 6 | | | |
| 14 | Basic Court in Aleksinac | 5 | 2 | | |
| 15 | Basic Court in Niš | 28 | | | 7 |
| 16 | Basic Court in Pirot | 2 | 1 | | |
| HIGHER AND BASIC - TOTAL | | 126 | 10 | | 411 |
| APPELLATE COURT IN NOVI SAD | | | | | |
| 1 | Higher Court in Novi Sad | 2 | | | 1 |
| 2 | Higher Court in Sombor | | | | 1 |
| 3 | Higher Court in Sremska Mitrovica | 3 | | | 1 |
| 4 | Higher Court in Šabac | 1 | | | |
| 5 | Basic Court in Bečerr | 1 | 1 | | 1 |
| 6 | Basic Court in Zrenjanin | 2 | | | |
| 7 | Basic Court in Bačka Palanka | 5 | 5 | | |
| 8 | Basic Court in Novi Sad | 24 | 1 | | 1 |
| 9 | Basic Court in Vrbas | | 9 | | |
| 10 | Basic Court in Sombor | 5 | 2 | | 1 |
| 11 | Basic Court in Ruma | 6 | | | 3 |
| 12 | Basic Court in Sremska Mitrovica | 13 | 1 | | 4 |
| 13 | Basic Court in Stara Pazova | 9 | | | 3 |
| 14 | Basic Court in Subotica | 1 | 2 | | |
| 15 | Basic Court in Loznica | 15 | | | 4 |
| 16 | Basic Court in Šabac | 11 | | | |
| HIGHER AND BASIC - TOTAL | | 98 | 21 | | 20 |

X APPLICATION OF THE NEW LAW ON ENFORCEMENT AND SECURITY

Through the implementation of systemic measures defined in the special program for reduction of backlog enforcement cases, with the adoption of the new Law on Enforcement and Security, the Republic of Serbia has enabled a comprehensive disposition of backlog cases in the enforcement matter, since previously, the cases in this matter prevented the normal functioning of the judiciary.

The Supreme Court of Cassation, the Ministry of Justice and the High Court Council have jointly drafted and adopted the [Instructions for the implementation of the new Law on Enforcement and Security](#) which contains measures that determine the jurisdiction of courts and public bailiffs in enforcement and security proceedings and stipulate the obligations of enforcement creditors, courts, the Chamber of Bailiffs and public bailiffs in enforcement cases where there is a change of jurisdiction pursuant to this new Law, sanction the failure of mandatory action of enforcement creditors and action in individual enforcement cases pursuant to the new Law, as well as in ongoing cases.

Implementation of the Instructions in basic courts was supported by the European Union through the IPA funded "Judicial Efficiency Project". The implementation of these measures and with this support, great results have been achieved and the number of enforcement cases only in 2016 was reduced by 811.322 cases.

From January till June 2017, enforcement cases are disposed in line with the routine procedure, without any systemic legal interventions, but, as already mentioned, due to the electronic migration of cases between the Belgrade courts, the Iv cases related to the PUC "Infostan" and other public enterprises in Belgrade are not being processed, so the majority of disposed cases in this matter can be expected in the second half of this calendar year.

According to the table, in all courts in the Republic of Serbia, in the reporting period, the total of 64.808 backlog enforcement cases was disposed.

| | 2016 | | 01.01 – 30.06.2017. | |
|---|---------------------|--|---------------------|--|
| OVERVIEW OF THE NUMBER OF DISPOSED BACKLOG CASES IN COURTS IN THE REPUBLIC OF SERBIA | | | | |
| | Number of judges | Total number of disposed backlog cases | Number of judges | Total number of disposed backlog cases |
| TOTAL AT THE LEVEL OF SERBIA – ALL CASES | 2.569 | 1.068.063 | 2.615 | 163.613 |
| TOTAL AT THE LEVEL OF SERBIA – WITHOUT ENFORCEMENT | 2.299 | 172.879 | 2.360 | 98.805 |
| Basic Courts – I + Iv | 205 | 878.576 | 220 | 60.431 |
| Commercial Courts – all enforcement | 65 | 16.608 | 35 | 4.377 |

Since the enforcement system in courts still contains 636.576 pending backlog Iv cases, and 102.212 backlog I cases, out of which 128.133 Iv cases are older than 10 years, as well as 6.357 I cases, new systemic measures are required, as well as the amendments to the Law on Enforcement and Security, enabling the suspension of the so-called small-value enforcements and undertaking individual measures in all courts in order to identify these small claims and implement measures that will enable alternative resolution of these cases.

PRESIDENT OF THE SUPREME
COURT OF CASSATION
Dragomir Milojevic